

Vasa Model Comparison

Use this reference sheet to determine which MODEL YEAR you own to ensure you order the correct parts for your Vasa Trainer / Vasa Ergometer.

VASA TRAINERS:

STEP 1: Determine if you have a 2"x2" or a 2"x3" monorail and go to the corresponding reference sheet.

STEP 2: Look at the images on the RIGHT of each description. Identify the closest match and verify the description matches the components of your Trainer.

STEP 3: Write down the model year below.

**VASA TRAINER
MODEL YEAR:**

VASA ERGOMETERS:

STEP 1: Look at the images on the LEFT of each description. Determine which front end assembly is most like your unit. NOTE: The bottom portion of the assembly will either be solid (May 2005 - May 2012) or raised (June 2012+).

STEP 2: After you select the front end match, review the image on the RIGHT to determine which monorail system you have. Verify the description matches the components of your Ergometer.

STEP 3: Write down the model year below.

**VASA ERGOMETER
MODEL YEAR:**

Vasa Trainer - 2"x3" monorails



Vasa Nordic Trainer

Vasa Cross Trainer

non-folding

bike seat

Model Year:

October 1988 - January 1990



Vasa Pro

Vasa Sport

non-folding

padded bench

Model Year:

January 1990 - August 1994

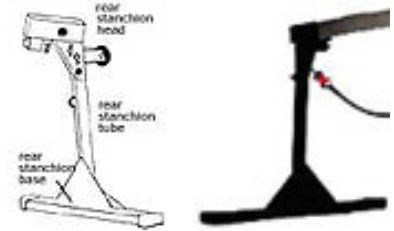
Vasa Trainer - 2"x2" monorails



Vasa Pro
Vasa Sport
 fold up (version 1)
 stainless/chrome monorail
 high profile

Model Year:
September 1994 - December 1996

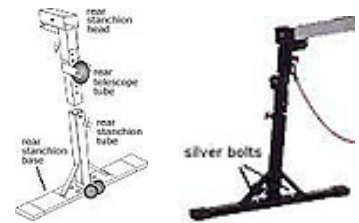
Rear stanchion detail:



Vasa Pro
Vasa Sport
 fold up (version 2)
 stainless/chrome monorail
 high profile

Model Year:
January 1997 - April 1999

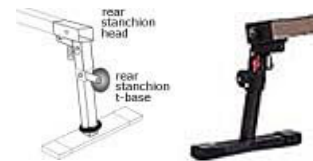
Rear stanchion detail:



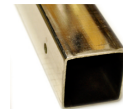
Vasa Pro SE
Vasa Pro
Vasa Sport
 fold up (version 3)
 stainless/chrome monorail
 low profile

Model Year:
May 1999 - December 2007

Rear stanchion detail:



Monorail detail - end view:



Current Model



Vasa Pro SE
Vasa Pro
 fold up (current version)
 aluminum monorail
 low profile

Model Year:
January 2008 - present

Monorail detail - end view:

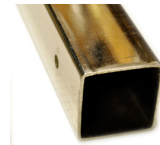


Vasa Ergometer



Vasa Ergometer
rewind system at base
stainless monorail

Monorail detail - end view:



May 2005 - December 2007



Vasa Ergometer
rewind system at base
aluminum monorail

Monorail detail - end view:



January 2008 - May 2012

*Current
Model*



Vasa Ergometer
rewind system in center housing
aluminum monorail

Monorail detail - end view:



June 2012 - present